

## Template for Evidence(s) UI GreenMetric Questionnaire

University : Alexandria University  
Country : Egypt  
Web Address : <https://alexu.edu.eg/>

### [1] Setting and Infrastructure (SI)

#### [1.4] Campus Setting



Faculty of Pharmacy and Faculty of Medicine (Alexandria University)



Faculty of Science in Moharram Bek (University of Alexandria, EG)



Main University Hospital



Campus of Humanities and Social Sciences (Alexandria University)



**Faculty of Arts (Alexandria University)**



**Faculty of Science in Moharram Bek (Alexandria University)**



**Faculty of Engineering (Alexandria University)**



**Medical Research Institute (Alexandria University)**



**Abis Campus (Alexandria National University)**



**Student housing at the University Campus in Smouha**



**Faculty of Agriculture – Shatby**



**Faculty of Agriculture – Saba Bacha**



**Faculty of Fine Arts**



**Faculty of Veterinary**



**Faculty of Physical Education for Boys**

**Laboratories:**



**Alexandria National University**



**PRACTCAL LAB SESSIONS**











Faculty of Medicine, Alexandria University



Faculty of Pharmacy, Alexandria University



Faculty of Engineering, Alexandria University



15<sup>th</sup>  
October  
2017

Training course on

**Atomic Absorption Techniques:  
Instrumentation and Application**

9 - 10	Registration
10 -12	Atomic Absorption Techniques: Instrumentation
12 -1	Break
1 -3	Atomic Absorption Techniques: Application



Registration Fees: 150 L.E

Certificates accredited from Alexandria University available upon request: 50 L.E

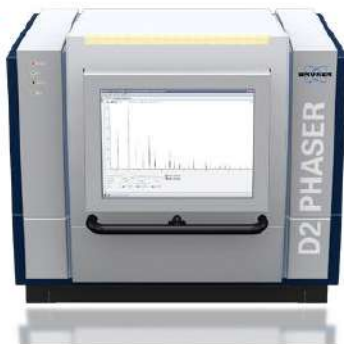
Registration: at Faculty of Science, Central lab unit, Maharam Bek Tel : 03-4975686



High-performance liquid chromatography (HPLC) Agilent 1200 Infinity Series



Fourier transform infrared spectroscopy (FT-IR) Bruker Tensor 37



X-ray Powder Diffraction XRD-D2 Phaser



Gas chromatography-mass spectrometry GC-MS Perkin Elmer Clarus 600/560 D



Electron Spin Resonance (ESR) JES-X3



Gel documentation system (Gel Doc) UVP-ItTM Imaging System

Faculty of Science, Alexandria University (Central Lab)

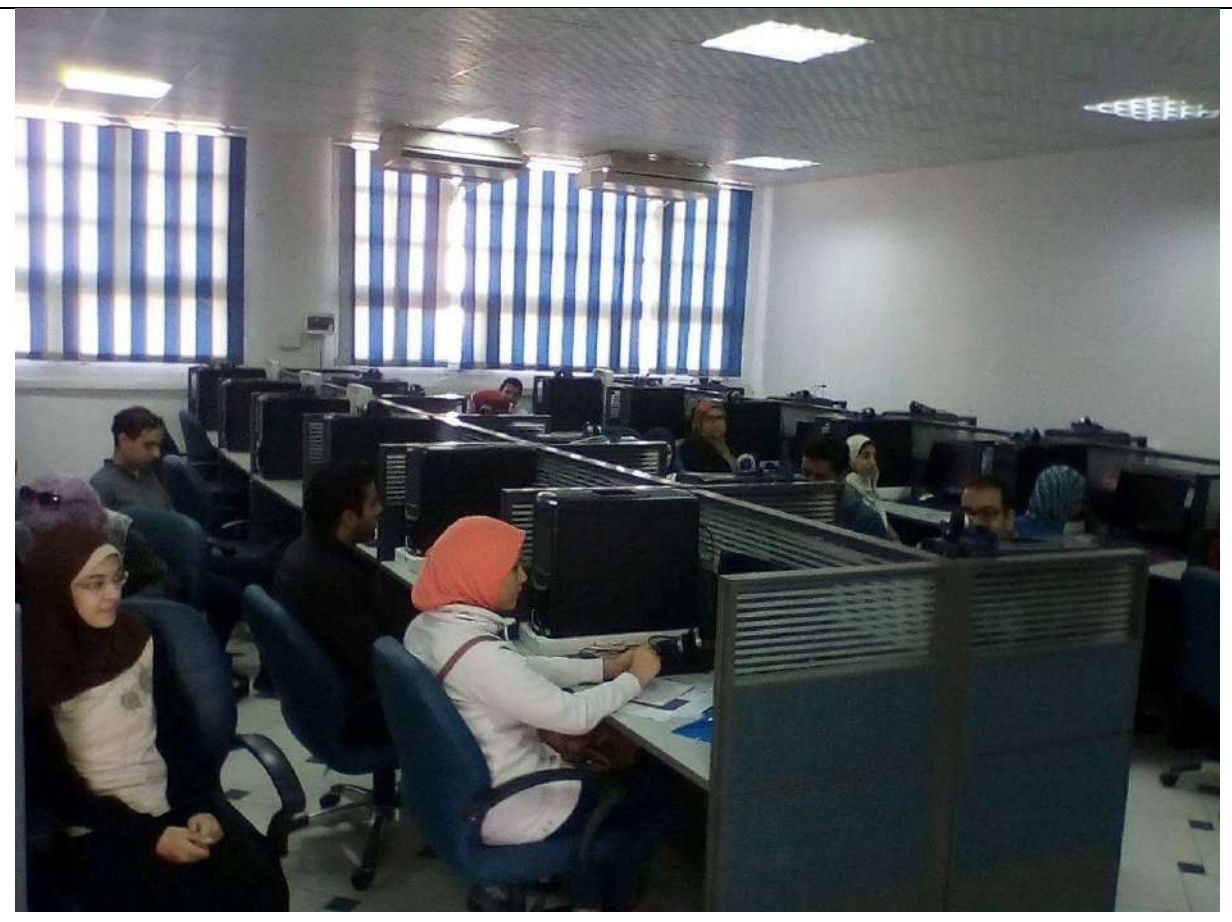


Faculty of Science, Alexandria University (Electron Microscope Unit)



The Water Center of Excellence, funded by USAID and administered by the American University (AUC) in Cairo – (Faculty of Engineering, Alexandria University)

## Computer labs













**Computer labs in different faculties at Alexandria University**

## Conference Hall





Faculty of Nursing

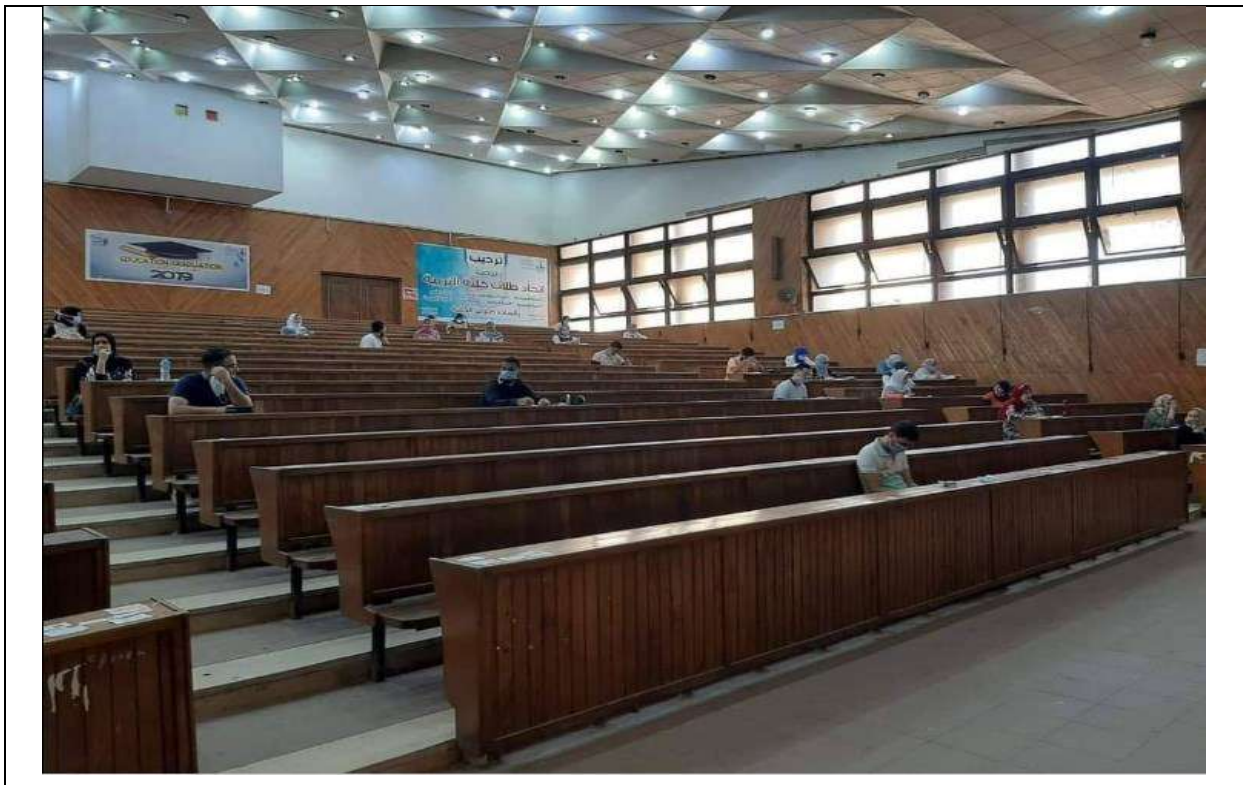


Faculty of Medicine



Faculty of Business

### Lecture halls and Classrooms





Faculty of Education



Faculty of Nursing









Faculty of Science



Faculty of Arts



Alexandria National University

**Libraries:**



**Central Library Alexandria University (Thesis Library)**



**Faculty of Economics and Politic Studies**



Faculty of Nursing

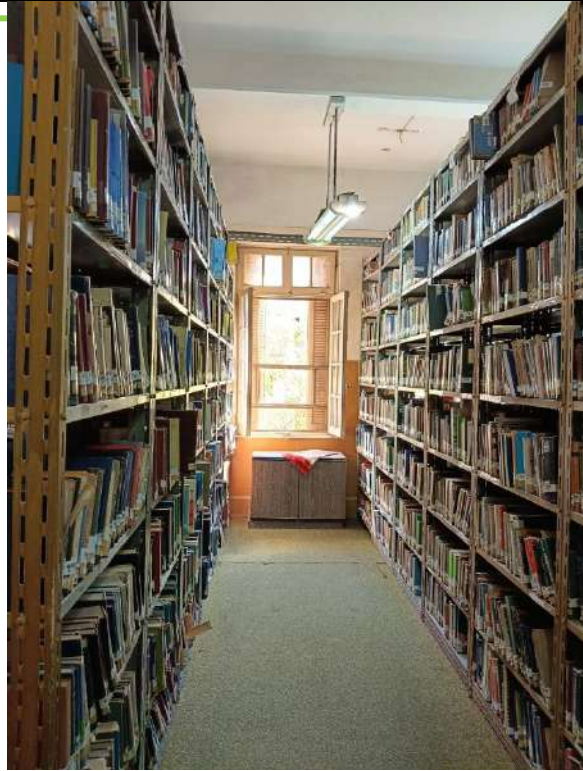


Physical Education for Boys

Faculty of Engineering



Faculty of Dentistry



Faculty of Science

**Description:**

- Alexandria University holds significant heritage value, not only due to its rich history but also through its heritage buildings. Established in 1938 as Farouk University, it was renamed Alexandria University in 1952. Since then, it has experienced continuous growth and expansion



across various fields. A recent research paper, authored by Prof. Dr. Dina Ezz Eldin and Dr. Heba Magdy (2024), researchers at the Faculty of Tourism and Hotels, Alexandria University, Alexandria, Egypt, titled *“Evaluating Alexandria University heritage buildings: a question of preservation, awareness and management”*, was investigating the heritage value of Alexandria University buildings. The research was published in the Journal of Cultural Heritage Management and Sustainable Development.

- Alexandria Campus is located in several campus cites, some of them are located in the city center such as: The medical complex, Faculty of Science in Moharram Bek, Faculty of Engineering, Campus of Humanities and Social Sciences, Faculty of fine Arts, Faculty of Specific Education, Faculty of Early Childhood Education, Faculty of Agriculture Saba Pasha, Expatriate Student Housing Saba Pasha, Medical Research Institute (Horia Street - Smouha), Higher Institute of Public Profession, Institute of Graduate Studies and Research, Central Library, Student Activities Center, Community service center, printing press, club and garage – Smouha, University Stadium (Student Service Center), Youth Care, University land in Smouha (College of Nursing - Children's Hospital - Faculty members residences), Land of Mouwasat Hospital.
- Other Campus cites are located in Suburban area such as: Faculty of Physical Education for Boys, Faculty of Physical Education for Girls, Veterinarians Abis, Saba Basha Babis tenth farm, Bagushe, Burj Al Arab International Medicine, Pigeon farm (affiliated with the Faculty of Agriculture), Earth of the globe, The farm land of the Faculty of Agriculture, Saba Basha, in the area of Khemisa, Siwa Oasis, Break of the Faculty of Science in the old Burj Al Arab, International Media (Burj Al Arab), The land of Wadi Natrun, Abis Campus.

**The total area of the campus cites is 8083208.274 m<sup>2</sup>**

**Link:** <https://alexu.edu.eg/index.php/about-us-ar>

**Link for Sustainable Development:** <https://alexu.edu.eg/index.php/en/sustainable-development>

<https://alexu.edu.eg/index.php/en/2015-11-24-10-38-07/ranking?id=6011>

<http://sustainability.alexu.edu.eg/>

**Link for Green University:**

[https://alexu.edu.eg/index.php/?option=com\\_content&view=article&id=5932&catid=21&lang=ar-AA](https://alexu.edu.eg/index.php/?option=com_content&view=article&id=5932&catid=21&lang=ar-AA)

### A statement of the areas of the university sites

NO	Campus	The area in square meters	Total Campus ground floor area in square meters	Total campus building area in square meters	Open Area in square meters	Total Area on campus covered in planted
1	University administration building	1940	1940	5820	0	0
2	Faculty of Physical Education for Boys	113311.93	33993.879	82764	22662.386	86688.968
3	Faculty of Physical Education for Girls	2891	867.3	12264.65	578.2	1445.5
4	The medical complex	91216	27364.8	35415.985	18243.2	45608
5	Faculty of Science in Horia Street	22197	6659.1	21248	4439.4	11098.5
6	Faculty of Science in Moharram Bek	5485	1645.5	17305	1097	2742.5
7	Faculty of Engineering	111034	30152	564046.205	22206.8	58675.2
8	Campus of Humanities and Social Sciences	80707	24212.1	106283	16141.4	40353.5
9	Faculty of fine Arts	2569	770.7	13068	513.8	1284.5
10	Faculty of Specific Education	1194	1194	1972.92	0	0
11	Faculty of Early Childhood Education	1407	422.1	1370.25	281.4	703.5
12	Medical Research Institute (Horia Street - Smouha)	2500	2500	19200	0	0
13	Higher Institute of Public Profession	700	700	2800	0	0
14	Community service center, printing press, club and garage - Smouha	3110	933	3110	622	1555
15	University Stadium (Student Service Center)	33831.7	10149.51	10149.51	6766.34	16915.85
16	Youth Care	1500	450	3000	300	750
17	Veterinarians Abis	141639.91	42491.973	42491.973	28327.982	70819.955
18	Saba Basha Babis tenth farm	202342.72	60702.816	60702.816	40468.544	101171.36
19	Bagushe	182108.45	54632.535	182108.45	36421.69	91054.225
20	Burj Al Arab International Medicine	1420445.92	426133.776	1420445.92	284089.184	710222.96
21	El Hamam Pigeon farm (affiliated with the Faculty of Agriculture)	1274759.16	382427.748	1274759.16	254951.832	637379.58
22	Earth of the globe El Maamoura	33386.55	10015.965	33386.55	6677.31	16693.275
23	The farm land of the Faculty of Agriculture, Saba Basha, in the area of Khemisa, Siwa Oasis	404685.45	121405.635	121405.635	80937.09	202342.725
24	University land in Smouha (College of Nursing - Children's Hospital - Faculty members residences)	105218.22	31565.466	105218.22	21043.644	52609.11
25	Break of the Faculty of Science in the old Burj Al Arab	21475.98	6442.794	21475.95	4295.196	10737.99
26	Land of Mouwasat Hospital	20234.27	6070.281	2023.27	4046.854	10117.135
27	The land of Wadi Natrun	4545	1363.5		909	2272.5
28	Abis Campus	2225769.96	667730.988	2225769.96	445153.992	1112884.98
29	Institute of Graduate Studies and Research	2764	829.2	4146	552.8	1382
30	Central Library	600	180	720	120	300
31	Student Activities Center	2270	681	1362	454	1135
32	Faculty of Agriculture Saba Pasha	144200.934	2561.03	2561.03	40468.544	101171.36
33	Expatriate Student Housing Saba Pasha	722.2	216.66	866.64	144.44	361.1
34	International Media (Burj Al Arab)	1420445.92	426133.776	426133.776	284089.184	710222.96
	<b>Total</b>	<b>8083208.27</b>	<b>2385538.83</b>	<b>6795394.87</b>	<b>1627003.21</b>	<b>4070666.23</b>
	<b>Ratio</b>	<b>100%</b>	<b>30%</b>		<b>20%</b>	<b>50%</b>

*Said Al*